

# Scooping the Poop for Better Water Quality

---

Arundel on the Bay's Efforts to Help Keep Our Water's Clean

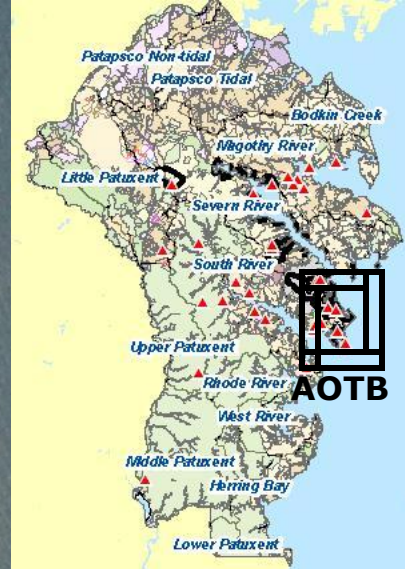
Julie Winters, Master Watershed Steward 2009 Candidate  
winterstime@aol.com

# Watershed Stewards Academy

---

- The Watershed Stewards Academy:
    - AACO DPW and Arlington Echo Outdoor Education Center
    - Train community leaders, called “Master Watershed Stewards”, to reduce the negative impacts of stormwater runoff in Anne Arundel County.
    - Master Stewards ID and do projects in their communities/educate their neighbors
-





**Ann Arundel County**

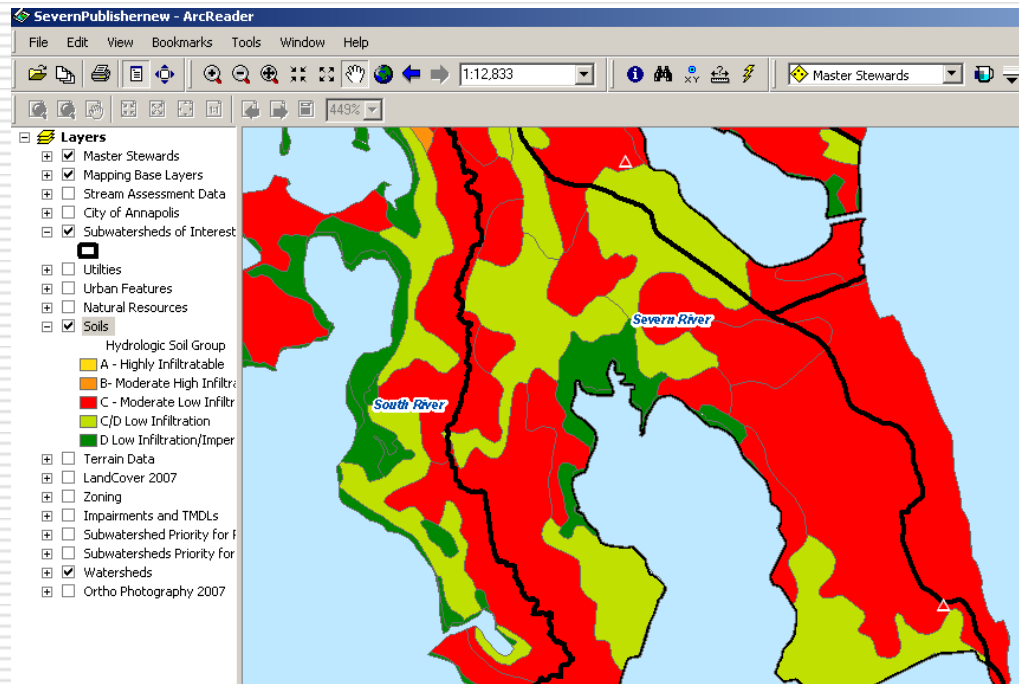
**Severn River Watershed**

**South River Watershed**



# Pollution Sources in AOTB

- Most rain water flows from gutters over low infiltrating soils to the Bay and Fishing Creek via swales and ditches



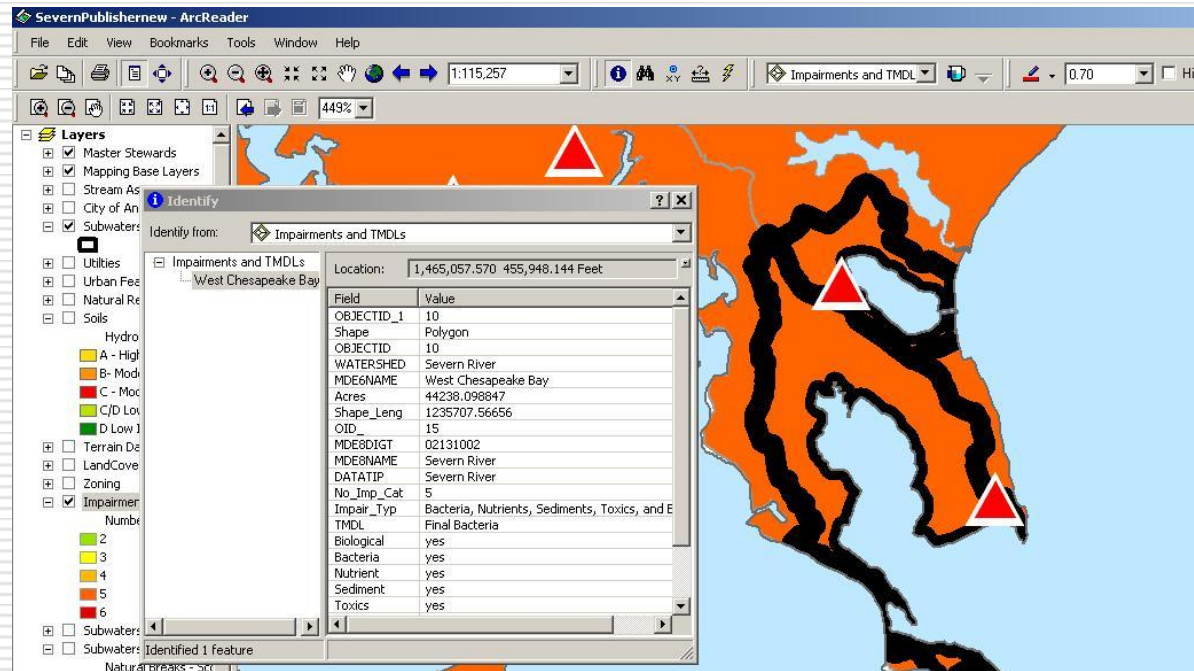
# Pollution Sources in AOTB

- 70% (approx) impervious with low infiltration



# Pollution Sources in AOTB

- TMDL for bacteria, biological, nutrients, sediments and toxics



# Pollution Sources ~ Severn & South Basins (Hypothesis: Similar Situation in AOTB)

Subwatershed	Fecal Coliform Source	Loading (Counts/day)	Loading (Percent)
Total	Livestock	4.00E+11	1.40%
	Pets	1.96E+13	68.79%
	Human	2.67E+11	0.94%
	Wildlife	8.23E+12	28.87%
	Total	2.85E+13	100.00%

Source: MDE April 2008; TMDL for Severn River Basin; Distribution of Fecal Coliform Source Loads in Severn River Basin

Table 2.4.2: Distribution of Fecal Coliform Source Loads in the Duvall Creek Basin

Fecal Coliform Source	Loading Counts/day	Loading Percent
Livestock	5.84E+10	15.4%
Pets	2.58E+11	68.0%
Human	3.04E+08	0.1%
Wildlife	6.30E+10	16.5%
Total	3.80E+11	100.0%

Source: MDE June 2006; TMDL for Severn River Basin; Distribution of Fecal Coliform Source Loads in South River Basin



# Pollution Sources in AOTB

---



Dog (and cat) poop is often not disposed of properly making it susceptible to becoming a pollution source in run off!

---



# Pet Waste Station Program – Start Up

---

- ❑ Review Oyster Harbor experience & methods, what worked and didn't
  - ❑ ID type/source of bag dispensers, bags and waste receptacles
  - ❑ Site stations
  - ❑ Purchase 3 (AOTB Agreed) of 6 (planned)
  - ❑ Apply for grants for waste receptacles and +3 stations
  - ❑ Install 6 stations; maintain
  - ❑ Outreach, outreach, outreach
-

# Opportunities to Act In My Community

---

- ❑ AACO flags AOTB as priority for restoration (2<sup>nd</sup> highest)
  - ❑ AOTB Board makes a priority to add recycling containers to the community areas, and testing pet waste stations
  - ❑ Some residents are already doing BMPs ~ possible champions
  - ❑ Support of the WSA Stewards community and consortium professionals will be advantageous
-

# Pet Station Order

---

- ❑ <http://www.belson.com/pwds.htm>
  - ❑ WSA sign with all of the partnering logos; free
  - ❑ One station is about \$350.00 for parts:
  - ❑ Pet litter bag dispenser (comes with 400 bags); DP-1002-2; \$90.00; Quantity = 1
  - ❑ 10 gallon round waste receptacle (aluminum green); DP-1206; \$180.00; Quantity = 1
  - ❑ Heavy waste bag receptacle liner bags; DP-1404; \$19.00; Quantity = 1
  - ❑ 2" X 2" square mounting post - 4' to 8' telescopic post galvanized; DP-1301-P; \$61.00; Quantity = 1
-



Mutt Mitt

Pick-Up Mitt

Mutt Mitt

Degradable Pick-Up Mitt

DOG POT

PLEASE CLEAN UP  
AFTER YOUR DOG!

DOG POT

PLEASE CLEAN UP  
AFTER YOUR DOG!



## **POOP HAPPENS ... DEAL WITH IT!!!**

**SCOOP THE POOP FOR BETTER WATER QUALITY!**

Please help keep our water clean by picking up your pet's waste!

Pet waste contains nutrients and bacteria that are dirty and ruin the Bay's water. Rain water can carry pet waste left on the ground to the Bay.

Removal of pet waste required by AACO law  
Article 12 Sec. 4-909; fines up to \$500.00



**Sign for each  
pet waste station  
Approx 8.5" X 11"**

# Pet Waste Station Locations

---

Google Map of  
Arundel on the Bay  
and Oyster Harbor  
Pet Waste Stations





# Spreading the word

---

- Community Newsletter (mail)
  - Community Website
  - Community e-mail blast
  - Talk with people on walks with dogs
  - Annapolis Green
  - The Capital* newspaper ~ "Our Bay" section
  - Community meetings, picnics, gatherings
-

# Long-term goal for Arundel on the Bay

---

- Foster reduced polluted run off, empower resident choice, and improve resident understanding of actions they can choose to adopt to:
    - properly dispose of pet waste
    - RainScape
    - reduce their source uses of nitrogen and phosphorus
    - plant native species and more trees
-

---

*Another Rosebud and Daisy Production*  
*2009*  
*Woof!*

